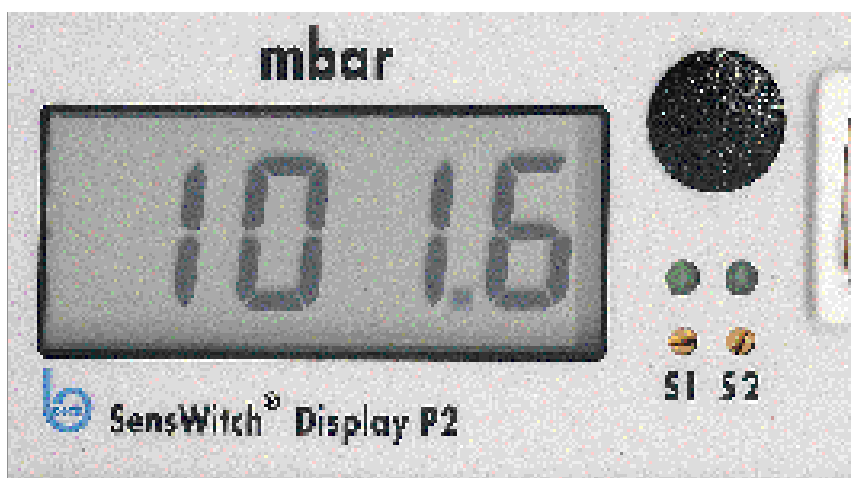
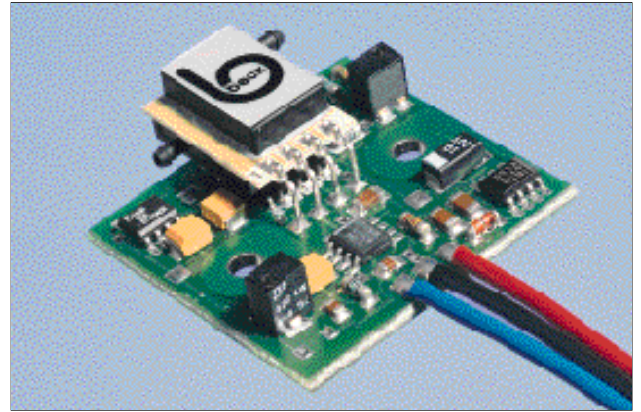


Beck.

The electronic
pressure transmitters.



Pressure transmitters



The pressure transmitters work on the basis of a piezoresistive pressure sensor and are suitable for monitoring gaseous, non-aggressive media. All pressure transmitters are equipped with two pressure connections to measure differential pressure, positive pressure or vacuum.

Applications

- Monitoring air filters and ventilators
- Level monitoring of fluids
- Monitoring air flows
- Pressure monitoring in clean rooms

Pressure transducer

Pressure ranges	Overload capacity	Linearity and hysteresis error (maximum, in % of FS)	Temperature error in the range 0–50° C (in % of FS)	Long-term stability (typical, in % of FS/year)	Repetition accuracy (in % of FS)	Response time
0... 250 Pa	2.5 kPa	+ – 1.0	+ – 5.0	+ – 0.5	+ – 0.2	1 ms
0... 500 Pa	2.5 kPa	+ – 1.0	+ – 5.0	+ – 0.5	+ – 0.2	1 ms
0... 1 kPa	2.5 kPa	+ – 1.0	+ – 2.5	+ – 0.5	+ – 0.2	1 ms
0... 2.5 kPa	30 kPa	+ – 1.0	+ – 1.0	+ – 0.1	+ – 0.5	1 ms
0... 5 kPa	75 kPa	+ – 1.0	+ – 1.0	+ – 0.1	+ – 0.5	1 ms
0... 10 kPa	100 kPa	+ – 1.0	+ – 1.0	+ – 0.1	+ – 0.5	1 ms
0... 25 kPa	100 kPa	+ – 1.0	+ – 1.0	+ – 0.1	+ – 0.5	1 ms
0... 50 kPa	100 kPa	+ – 1.0	+ – 1.0	+ – 0.1	+ – 0.5	1 ms
0... 100 kPa	300 kPa	+ – 1.0	+ – 1.0	+ – 0.1	+ – 0.5	1 ms
0... 250 kPa	600 kPa	+ – 1.0	+ – 1.0	+ – 0.1	+ – 0.5	1 ms

Measuring principle

Piezoresistive pressure transducer, suitable for air and non-aggressive gases.

Temperature ranges

Compensated temperature range: 0...+ 50° C

Operating range and storage range: 0...+ 70° C from 250 Pa to 1 kPa; – 25... + 85° C from 2.5 to 250 kPa.



	Pressure transmitter 980. xx	Digital manometer SensWitch® Display P2	Pressure transmitter SensWitch® AD-14
Pressure connection	6 mm hose connector	2 quick-release connections 4 or 6 mm on the back of the unit; alternatively 1 front pressure connection	2 quick-release couplers 4 mm on the front of the unit
Supply voltage	15...30 VDC with reverse voltage protection	15...30 VDC with reverse voltage protection or 230 VAC	15...30 VDC with reverse voltage protection
Output signals	0...10 V short-circuit-proof 4...20 mA (two-wire system)	0...10 V short-circuit-proof 4...20 mA (two-wire system)	0...10 V short-circuit-proof 4...20 mA (two-wire system)
Switching outputs	on request	2 (optional), load capacity 1A/230 VAC	4, load capacity 100 mA/24 VDC per channel, open collector
Display	none	3.5 digits, 7-segment LCD, figure height 12.7 mm, display of the sign, contrast ratio 1:8	none
Electrical connection	connecting lead or plug connection	7-pin connector, 16-pin connector for additional two-wire system	Screw connections for conductor up to maximum 2.5 mm ²
Mounting	2 serrated screws, mounting bracket optional	Switchboard device according to DIN 43700	Top-hat rail mounting according to DIN EN 50022-35
Weight	55 g	500 g	300 g
Protection category	IP 50 (optional IP 65)	IP 20	IP 20

