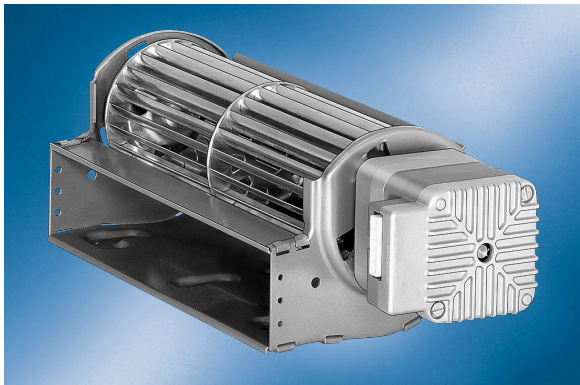


Tangential fans

With EC motor



- **General description:** Tangential fans with electronically commutated direct current motors Integrated electronics

- **Motor position:** Right

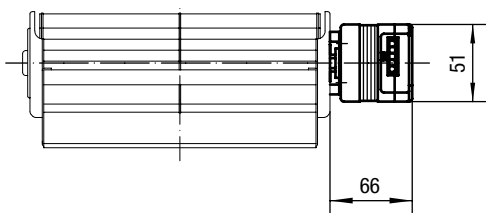
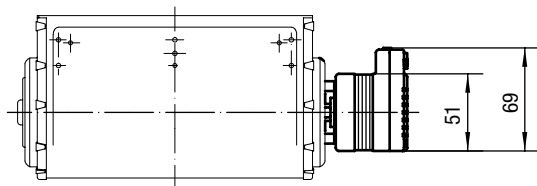
- **Insulation class:** F

Nominal data

Type	Motor	Voltage VDC	Air flow m ³ /h	Speed 1/min	Power consumption W	Ambient temperature °C	Weight kg
QLN65/1800-2212	--	24	210	1850	16	0 .. 60	0.80

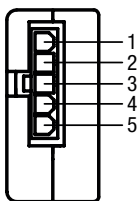
Subject to modification

Specific drawing



Refer to AC basic type for dimensions

Connector pin assignment



- 1: U 18 to 26.4 VDC
 - 2: Hall sensor OUT
 - 3: Signal GND
 - 4: PWM input 1-6 kHz
 - 5: GND
- to fit Molex Mini-Fit, Jr plug

Tangential fans

With EC motor

Technical description

- **General description:** Tangential fans with electronically commutated direct current motors Integrated electronics
- **Motor position:** Right
- **Insulation class:** F
- **System of protection:** IP20

Contact

ebm-papst Landshut GmbH
Hofmark-Aich-Straße 25
D-84030 Landshut
Phone +49 (0) 871 / 707-0
Fax +49 (0) 871 / 707-465
info3@de.ebmpapst.com
www.ebmpapst.com