
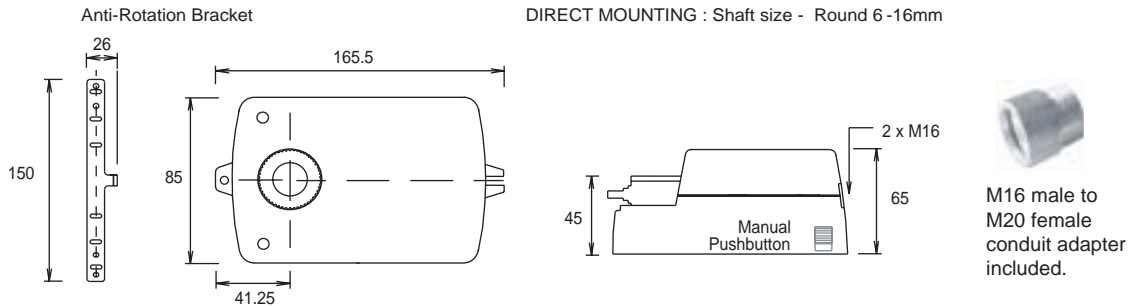


**DAMPER / VALVE MOTORS
4Nm MODULATING**

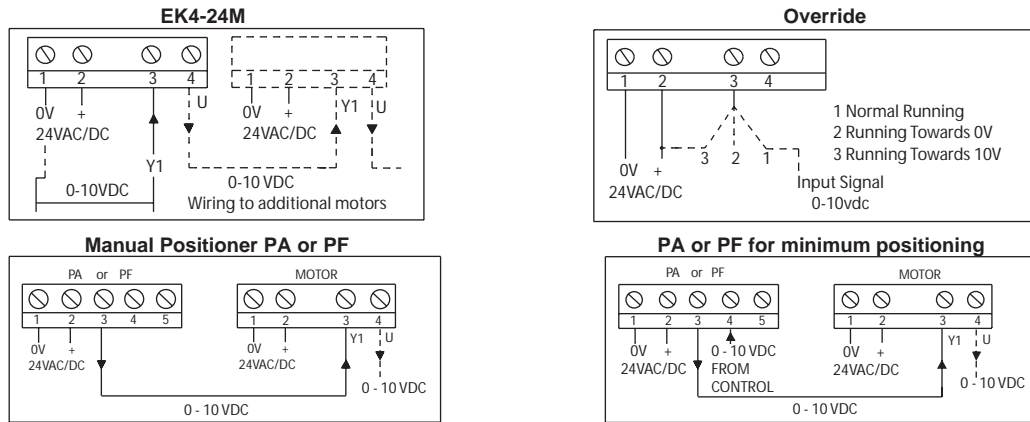
EK4-24M

<p>These small motors can be fitted directly onto air damper shafts as used in HVAC systems. They are also suitable for use on control valves. The rotary operation modulates according to the 0-10vdc signal in order to open and close dampers, valves etc.</p>	 <p style="text-align: center;">EK4-24M</p>		<p>The motor stops automatically when the end positions are reached. Up to 5 motors can be wired in parallel. Max. ambient -20/+50°C Max angle of rotation 90° Adjustable angle of rotation limiter 0-30° & 90-60° Reversible position indication 0-10, 10-0 Noise level 40dB Manual Override Supply : 24VAC/DC ±15% Enclosure Flammability = UL94-V0</p>				
			Type	Supply 50/60Hz	Input	Run Time Approx	Torque
EK4-24M	24VAC/DC	0-10vdc	35s	4Nm	1m ²	3.5	IP42

DIMENSIONS:



WIRING:

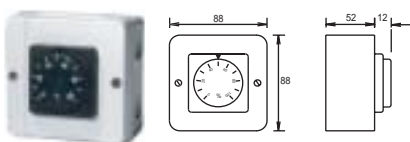


INPUT RESISTANCE Y1 > 100KΩ LOAD RESISTANCE U > 50KΩ
 ON POWER CUT THE MOTOR STOPS. IF THE INPUT SIGNAL IS CUT, THE MOTOR RETURNS TO 0VDC POSITION
 Terminals 0.5-2.5mm² Min sensor cable size 7/0.2mm Max length 100m. Screened cable is recommended.
 The screen should be earthed at controller end only Keep sensor wires away from power cables/units which may cause interference.

SETTING:

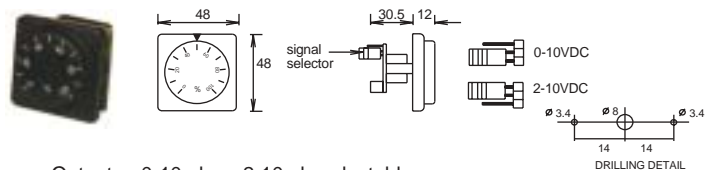


ACCESSORIES: PA Positioner 0-100% Wall Mounting



Output 0-10vdc or 2-10vdc selectable
 Up to 10 motors can be controlled from one positioner.

PF Positioner 0-100% Front Panel Mounting



Output 0-10vdc or 2-10vdc selectable
 Limit stops are provided under the knob to limit the angle of rotation.

CAUTION: Some of these products may be connected to 24VAC supply. Isolate device from electrical supply before removing cover. The device should be checked by a qualified technician before applying any voltage. Observe all relevant safety precautions, wiring/earthing regulations & electrical ratings. Observe design limits of temperatures and torque ratings. Always ensure the device operates correctly. If failure of the device can cause damage a safety backup control should be fitted. All data is for guidance purposes only, subject to change without prior notice and not guaranteed to be absolutely correct unless confirmed by us in writing.

